

Original Series Snow Ice



P160

Fresh Milk Snow Ice

Light and creamy premium milk snow ice.



P180

Ripe Strawberry Snow Ice

Refreshing snow ice made with fresh strawberry puree.



P180

add +20
for sugarfree

Dark Chocolate Snow Ice

Dark, smooth, creamy and rich chocolate snow ice made from real cocoa.



P190

Yummy Ube Snow Ice

Rich and creamy ube snow ice. Made with fresh ube halaya.



P190

Sweet Mango Snow Ice

Mango snow ice made with fresh mango puree.



P220

Cheezy Cheese Snow Ice

Cheezy, creamy and light. Made with real cheese.



P210

Premium Matcha Snow Ice

Bitter sweet green tea made from premium matcha powder.



P220

add +20
for sugarfree

Healthy Soy Snow Ice

Our best seller. Made from fresh soy milk with the smoothest texture that melts in your mouth.



P180

Milk Tea Snow Ice

Made from authentic oolong tea, brewed to perfection. Perfect for milk tea lovers.



P220

Yogurt Snow Ice

Smooth and fresh yogurt with nourishing goodness.



Seasonal

P220

Fresh Avocado Snow Ice

Made with real Avocado fruits.
**Seasonal

Special Series Snow Ice



P190

Let's Split

"Milk" snow ice sprinkled with nuts, sliced fresh bananas, drizzled with chocolate and strawberry syrup and a cherry on top.



P230

It's Complicated

"Ube" snow ice with tapioca, homemade leche flan, with shredded cheese on top.



P260

You Got Me

"Yogurt" snow ice with fresh mango, strawberry syrup and almond flakes.



P230

Summer Fling

"Mango" snow ice with freshly sliced mangoes, drizzled with mango puree, and topped with nata jelly.



P230

Meant To Be

"Matcha" snow ice with crispy cornflakes, drizzled with rich condensed milk, and red beans on the side.



P240

First Crush

"Soy" snow ice with fresh tapioca and drizzled with special brown syrup.



P240

Something Cheezy

"Cheese" snow ice drizzled with chocolate syrup, topped with graham powder and cheese cubes.



P210

First Kiss

"Strawberry" snow ice with fresh banana, candy sprinkle, cornflakes and strawberry puree.



P220

Brown Sugar Milk Tea

"Milk Tea" snow ice with fresh tapioca and drizzled with brown sugar syrup.



P240

Mango Float

"Mango" special salted cream, fresh mango fruit and graham.



P240

Secret Affair

"Dark Chocolate" snow ice with homemade brownie chunks, coco crunch, nuts, stik-o and drizzled with choco syrup.

Seasonal



P260

Amazing Avocado

"Avocado" snow ice topped with fresh avocado fruits and condensed milk.
**Seasonal

Starters



Baked Nachos

Our best selling addictive baked nacho dip served with chips.

P360



Koori Chicken Chops

Crowd favorite snack! Taiwan style crispy fried chicken chops best paired with your choice of milktea.

P180



Fish n' Chips

Golden fried crispy breaded fish fillet served with french fries and our homemade tartar sauce.

P295



Potato Wedges

Our signature deep fried potato wedges with our very own cheese dip.

P210

Soup & Salad



Tomato Cream Soup

P180



Koori Chicken Salad

Crispy chicken cubes on top of fresh lettuce, alfalfa sprouts, tomato, cucumber and sliced egg. Served with homemade sesame dressing.

P275



Pumpkin Soup

P180



French Onion Soup

P200



Garden Mango Salad

Bed of lettuce with nachos, tomato cubes, cucumber and shredded egg. Served with homemade sesame dressing.

P245

Sandwiches



Koori Cheese Burger

Our homemade burger patty with fresh lettuce, tomato, melted cheese and crispy bacon.

P360



Grilled Cheese & Tomato Soup

Classic grilled cheese served with our very own hearty tomato soup and crispy fries.

P240



Chicken Pesto

Chicken mayo with crisp lettuce and homemade pesto on warm ciabatta bread.

P285



Tomato Pesto

Fresh slices of tomatoes, homemade pesto and melted cheese on ciabatta bread.

P265



Ham & Mango Panini

Refreshing ham and mango combination with honey mustard dressing.

P265



Philly Beef & Tomato

Beef sirloin with homemade pesto sauce, fresh slices of tomato, lettuce and cheese.

P295



Coldlayers Clubhouse

A classic favorite clubhouse sandwich, layered with chicken, egg, ham, cheese, crisp lettuce and fresh tomatoes.

P340

All Day Breakfast



P320

Homemade Garlic Beef Tapa

Homemade marinated garlic beef tapa paired with egg of your choice and garlic rice.



P285

Glazed Pork Tocino

Glazed tender pork fillet paired with egg of your choice and garlic rice.



P310

Boneless Garlic Bangus

Crisp coated fillet of bangus marinated in our special sauce topped with garlic bits.



P280

Bacon & Egg

Bacon, toast, fried potato wedges, side salad, and your choice of egg.



P265

Ham & Egg

Ham, toast, fried potato wedges, side salad, and your choice of egg.

Add P50 for a cup of americano



Pasta



P310

Coldlayers Pasta

Our signature pasta with tomato cream sauce, fresh basil and parmesan cheese.



P340

Truffle Mushroom

Our signature white sauce pasta with truffle and mushroom.



P320

Cheezy Meat Lasagna

Layers of lasagna smothered with classic meat sauce and bechamel topped with melted cheddar and parmesan cheese.



P340

Creamy Chicken Pesto

Our best seller. Creamy pesto sauce on penne pasta topped with crispy breaded chicken fillet.

Hot Meals



P320

Shawarma Rice Bowl

Shawarama rice, with beef, fresh lettuce, tomato, cucumber, white onion served with our homemade garlic and cheese sauce.



P320

Gyudon

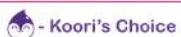
Thinly sliced tender beef with fresh white onions simmered in mildly sweet sauce.



P290

Burger Steak Bowl

Our homemade burger patty topped with special teriyaki sauce, lettuce, white onion and garlic bits.



- Koori's Choice - Vegetarian

Hot Meals



Boneless Chicken Teriyaki

Pan-grilled boneless chicken thigh fillet with our special teriyaki sauce.

P340



Baked Chicken Casserole

Oven-baked mozerella rice with mushroom cream sauce topped with juicy pan-grilled chicken teriyaki.

P380



Chicken Cordon Bleu

Another all time favorite. Herbed crusted chicken breast, stuffed with cheese and ham.

P360



Chicken w/ Fries

Crispy chicken chops with fries and side salad.

P340



Tender Pork Chop w/ Mushroom Gravy

Pan-seared tender chops marinated with special herbs.

1 chop
P360

2 chops
P420



Salisbury Steak

Juicy homemade burger patties smothered with herbed gravy with garlic bits.

P320



Baked Pork Chop Casserole

Oven baked mozerella rice with tomato cream sauce topped with juicy pan-grilled pork chop.

P380



Korean Beef Stew

Tender beef ribs slowly cooked for 6 hours that melts in your mouth.

P410

Vegetarian Meals



P320

Meatless Lasagna

Layers of lasagna smothered with classic meatless tomato sauce and bechamel topped with melted cheddar and parmesan cheese on top, served with garlic bread.



P285

Unmeat Shawarma Rice Bowl

Shawarama rice unmeat beef cubes, with fresh lettuce, tomato, cucumber, white onion served with our homemade garlic and cheese sauce.



P360

Unmeat Baked Nachos

Our famous vegetarian freshly Baked Nacho Dip.



P340

Unmeat Cheese Burger

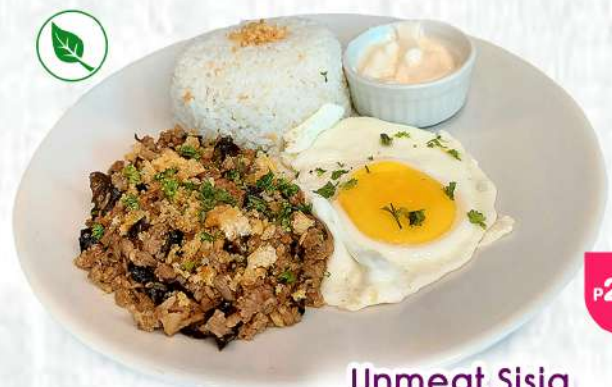
Unmeat patty, fresh lettuce, tomato with melted cheese. served with potato wedges or fries.



P310

Unmeat Burger Steak

Unmeat veggie burger patty topped with teriyaki sauce, mayo, garlic bits, and served with side salad and garlic rice.



P290

Unmeat Sisig

Also one of our crowd favorite, guiltless veggie sisig topped with vegetarian chicharon served with egg and garlic rice.





Celebration Box



Contact Us:

www.coldlayers.com

coldlayersph@gmail.com

  [coldlayerscafe](https://www.instagram.com/coldlayerscafe)

Milk Tea & Drinks

Coldlayers Milk Tea

	16 oz	22 oz
☉ Coldlayers Pearl Milk Tea.....	120	140
☉ Wintermelon Pearl Milk Tea.....	130	150
Chocolate Pearl Milk Tea.....	130	150
Pudding Milk Tea.....	110	130
Horlicks Milk Tea.....	140	160
Ube Milk Tea.....	140	160
Ube Latte.....	140	160
Grass Jelly Milk Tea.....	110	130



Cheese Foam Series

	16 oz	22 oz
Classic Milk Tea w/ Cheese Foam.....	120	140
☉ Black Tea w/ Cheese Foam.....	120	140
Green Tea w/ Cheese Foam.....	110	120
☉ Wintermelon Milk Tea w/ Cheese Foam.....	130	150
Chocolate Milk Tea w/ Cheese Foam.....	130	150
Ube Latte w/ Cheese Foam.....	150	170



Coldlayers Tea Series

	16 oz	22 oz
Assam Black Tea.....	100	120
Green Tea.....	100	120
Lychee Green Tea.....	110	120
Strawberry Black Tea.....	110	120
Wintermelon Tea.....	110	120
Passion Fruit Green Tea.....	110	120
Coldlayers Fruit Tea.....	120	130



Brown Sugar Series

	16 oz	22 oz
☉ Brown Sugar Pearl Milk	130	150
Brown Sugar Pearl Milk Tea.....	130	150
Brown Sugar Pearl Milk w/ Grass Jelly.....	130	150
Brown Sugar Pearl Milk w/ Cheese Foam.....	140	160



Milk Tea & Drinks

Yakult Tea Series

	16 oz	22 oz
Signature Yakult Tea.....	130	150
Strawberry Yakult Tea.....	120	140
Lychee Yakult Tea.....	120	140
Passion Fruit Yakult Tea.....	120	140
Green Tea Yakult.....	100	120



Smoothies & Others

	16 oz	22 oz
Mango Aloe.....	120	140
Mango Tapioca.....	120	140
Mango Graham.....	150	180
Strawberry Banana.....	120	150
Frozen Chocolate w/ Cheese Foam.....	120	140
Ube Shake.....	120	140



Snow Ice Milk Tea Series

	22 oz
Classic Milk Tea w/ Milk Tea Snow Ice.....	180
Classic Milk Tea w/ Matcha Snow Ice.....	180
Chocolate Milk Tea w/ Strawberry Snow Ice.....	180
Chocolate Milk Tea w/ Ube Snow Ice.....	180
Chocolate Milk Tea w/ Soy Snow Ice.....	180
Mango Smoothie w/ Mango Snow Ice.....	230



Coffee & Tea

	HOT	ICED
Americano.....	100	100
Caffe Latte.....	110	110
Caffe Mocha.....	120	120
Capuccino.....	120	120
Chocolate.....	120	120
Caramel Macchiato.....	120	140
Vanilla Latte.....	120	140
Vanilla Sweet Cream Coffee.....	-	150
Brown Sugar Latte.....	-	130
Signature Iced Tea (Strawberry, Lychee, Passion Fruit).....	-	120

